

The way DVRPC is serving its GIS  
data to the public via the internet

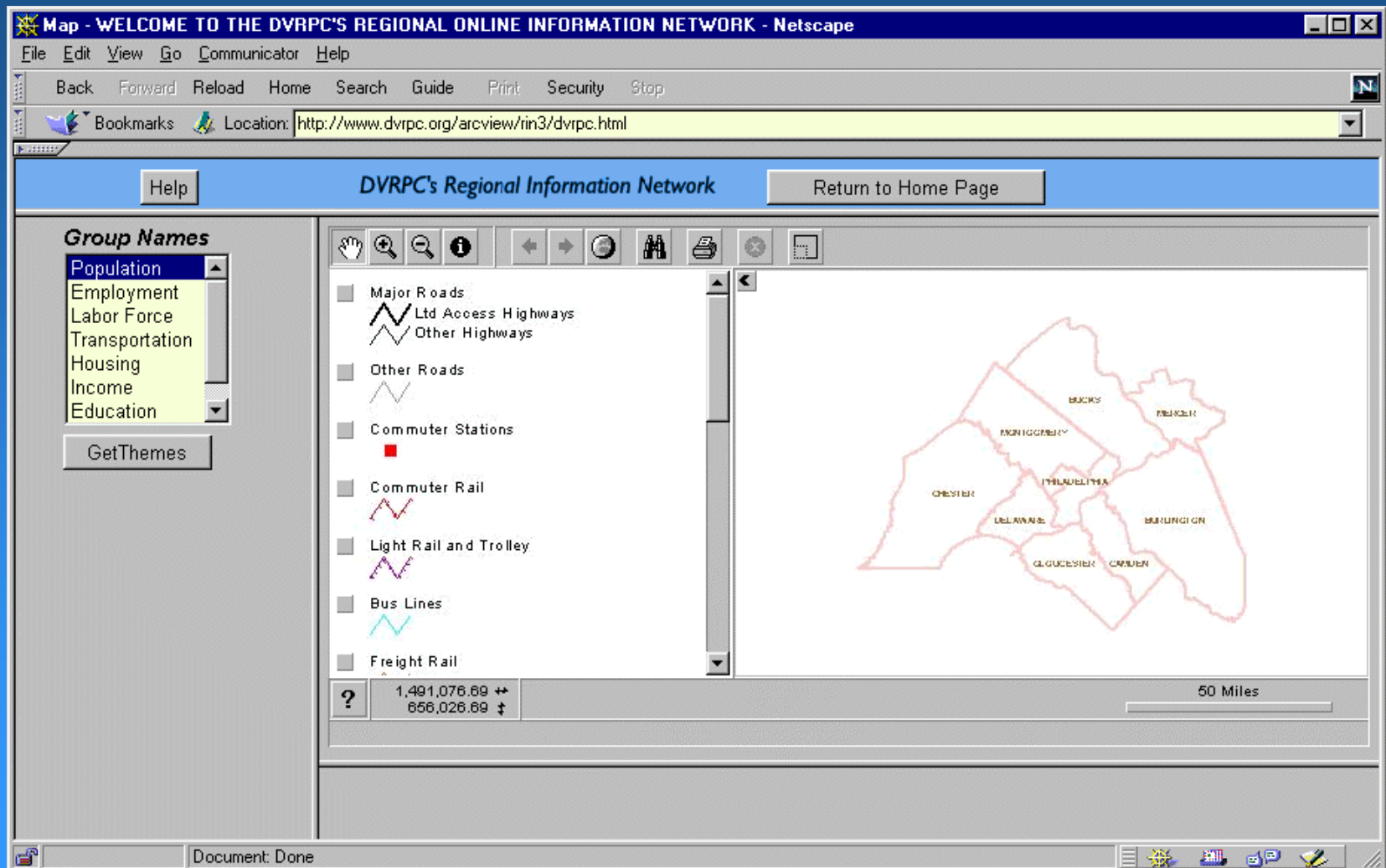
MAC URISA FALL MEETING 2005

September 29, 2005

Christopher R. Pollard



GIS Analyst, Cartographer, Online Mapping Developer, Practicing Geographer

# DVRPC's Original Online Mapping Application




DVRPC/ Data Services/ OnlineMapping: Regional Information Network (RIN) - Microsoft Internet Explorer

File Edit View Favorites Tools Help

Address  http://www.dvrpc.org/mapping.htm  Go

About DVRPC Meeting Calendar Data Services Transportation Regional Planning Public Affairs Related Links



**DVRPC**

[Return to Homepage](#)  
[Site Map](#)

Data Services

**ONLINE  
MAPPING**

*This site uses Unisys  
U.S. Patent No.  
4,558,302 and/or foreign  
counterparts, which is  
licensed by Unisys for  
use on this site as a  
public service.*

**DELAWARE VALLEY REGIONAL PLANNING COMMISSION**



## OnlineMapping

This online Geographic Information System (GIS) application was developed by DVRPC as part of our Regional Information Network. It contains a selective subset of GIS data. For more information regarding DVRPC's full GIS or to order custom maps, please contact DVRPC. With each application, you can interactively view thematic data, geographic features, create your own custom map and access information about certain features.

---


### General Mapping

This application was developed to provide access to basic map information in the nine-county Philadelphia metropolitan area for the general public.



### Economic Development Mapping

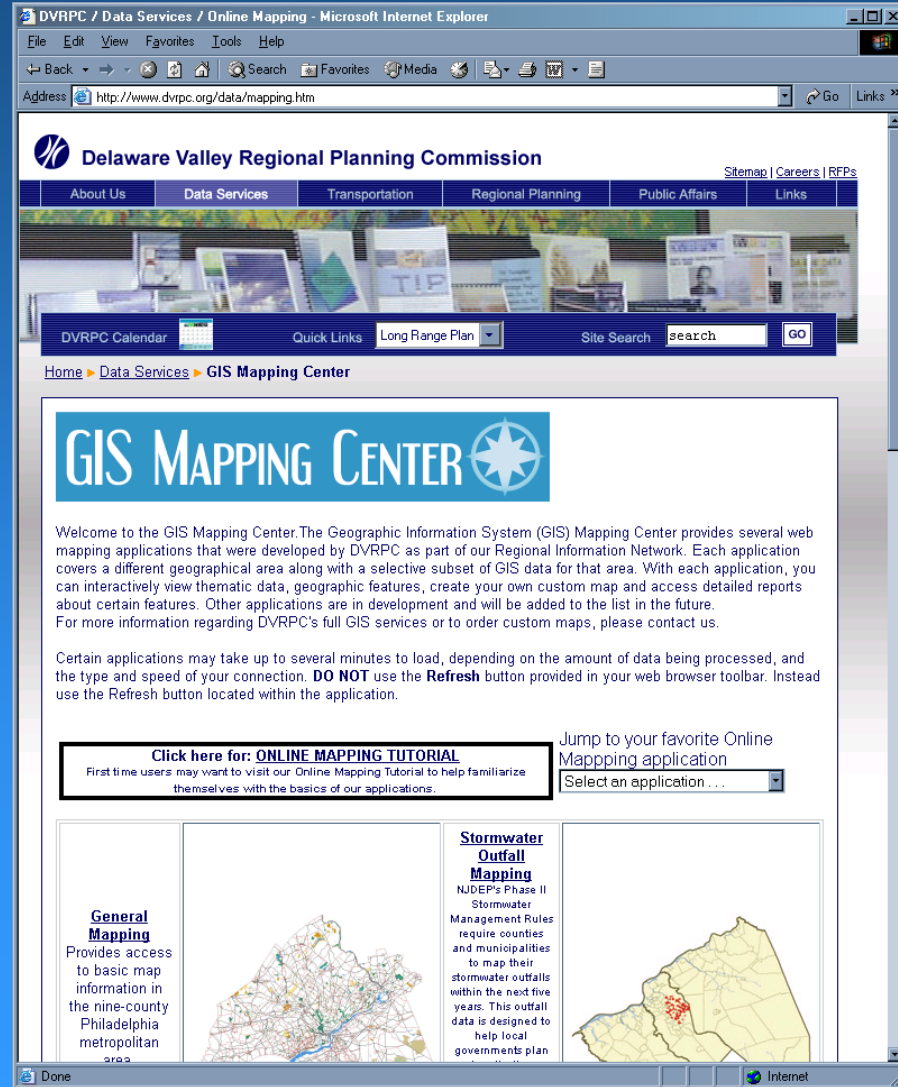
This application was developed for TeamPA's 7-county Southeastern PA region to assist in economic development of the region.



Internet

# GIS MAPPING CENTER

- General Mapping
- Trail Clearinghouse
- TIP Interactive Mapping (PA & NJ)
- Traffic Counts (PA & NJ)
- Orthophoto Tile Identification (2000)
- Conservation Planning (28 County Region)
- Stormwater Outfall Mapping (Tri-County)
- Economic Development (SEPA)



The screenshot shows the DVRPC / Data Services / Online Mapping - Microsoft Internet Explorer window. The address bar displays <http://www.dvrpc.org/data/mapping.htm>. The website header includes the DVRPC logo and navigation links: About Us, Data Services, Transportation, Regional Planning, Public Affairs, and Links. A banner image shows various maps and documents. Below the banner is a navigation bar with links to the DVRPC Calendar, Quick Links, Long Range Plan, and a Site Search box. The main content area features the GIS Mapping Center logo and a welcome message. A highlighted box contains a link to the **ONLINE MAPPING TUTORIAL** for first-time users. To the right, there is a section for jumping to favorite online mapping applications. The bottom of the page displays three application tiles: General Mapping, Stormwater Outfall Mapping, and Economic Development (SEPA), each with a brief description and a map thumbnail.

DVRPC / Data Services / Online Mapping - Microsoft Internet Explorer

File Edit View Favorites Tools Help

Back Forward Stop Home Search Favorites Media Print Mail News RSS Feeds

Address <http://www.dvrpc.org/data/mapping.htm> Go Links

**Delaware Valley Regional Planning Commission** Sitemap Careers RFPs

About Us Data Services Transportation Regional Planning Public Affairs Links

DVRPC Calendar Quick Links Long Range Plan Site Search search GO

Home Data Services GIS Mapping Center

## GIS MAPPING CENTER

Welcome to the GIS Mapping Center. The Geographic Information System (GIS) Mapping Center provides several web mapping applications that were developed by DVRPC as part of our Regional Information Network. Each application covers a different geographical area along with a selective subset of GIS data for that area. With each application, you can interactively view thematic data, geographic features, create your own custom map and access detailed reports about certain features. Other applications are in development and will be added to the list in the future. For more information regarding DVRPC's full GIS services or to order custom maps, please contact us.

Certain applications may take up to several minutes to load, depending on the amount of data being processed, and the type and speed of your connection. **DO NOT** use the **Refresh** button provided in your web browser toolbar. Instead use the Refresh button located within the application.

**Click here for: ONLINE MAPPING TUTORIAL**  
First time users may want to visit our Online Mapping Tutorial to help familiarize themselves with the basics of our applications.

Jump to your favorite Online Mapping application  
Select an application . . .

**General Mapping**  
Provides access to basic map information in the nine-county Philadelphia metropolitan area.

**Stormwater Outfall Mapping**  
NJDEP's Phase II Stormwater Management Rules require counties and municipalities to map their stormwater outfalls within the next five years. This outfall data is designed to help local governments plan.

Done Internet

- Intergraph (Pentium II)
- 400 MHz/256 RAM/8 GB
- Windows NT Operating System
- ArcIMS 3.0



# MAPS

# ESRI's ArcIMS 3.0

- Allow's DVRPC to share information, data & technology over the internet
- Easy to use at a variety of skill levels
- Reads data from (shapefiles, ArcSDE data layers, & several image formats)
- Good example of showing the public how GIS is viewed and distributed

# HTML Image Viewer

- Completes map image & sends it to the web browser (.JPG,.GIF, or .PNG)
- Supports a variety of browsers & platforms
- Less clientside processing
- Plug-ins aren't allowed




Layers

Legend

## 1. Select Theme

Default Theme

## 2. Select Layers

Click  to zoom in  
and add layers.

Visible Active

- ☒ ☐ County Boundary
- ☒ Delaware River
- ☒ County

3. Refresh Map



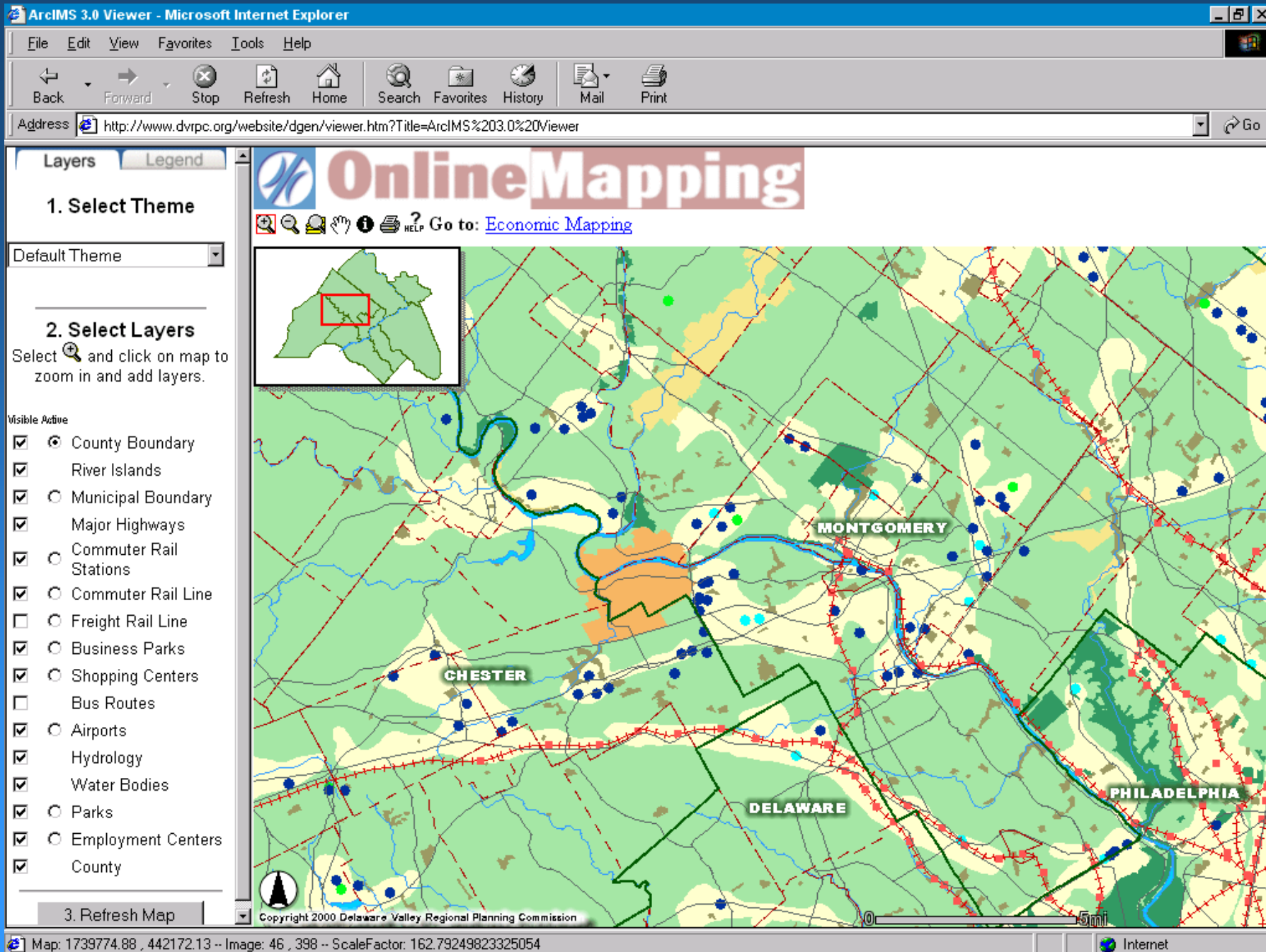
# OnlineMapping

 Go to: [Economic Mapping](#)



Copyright 2000 Delaware Valley Regional Planning Commission






## Layers

## Legend

## Data Layers

Select  and click on map to zoom in and add layers.

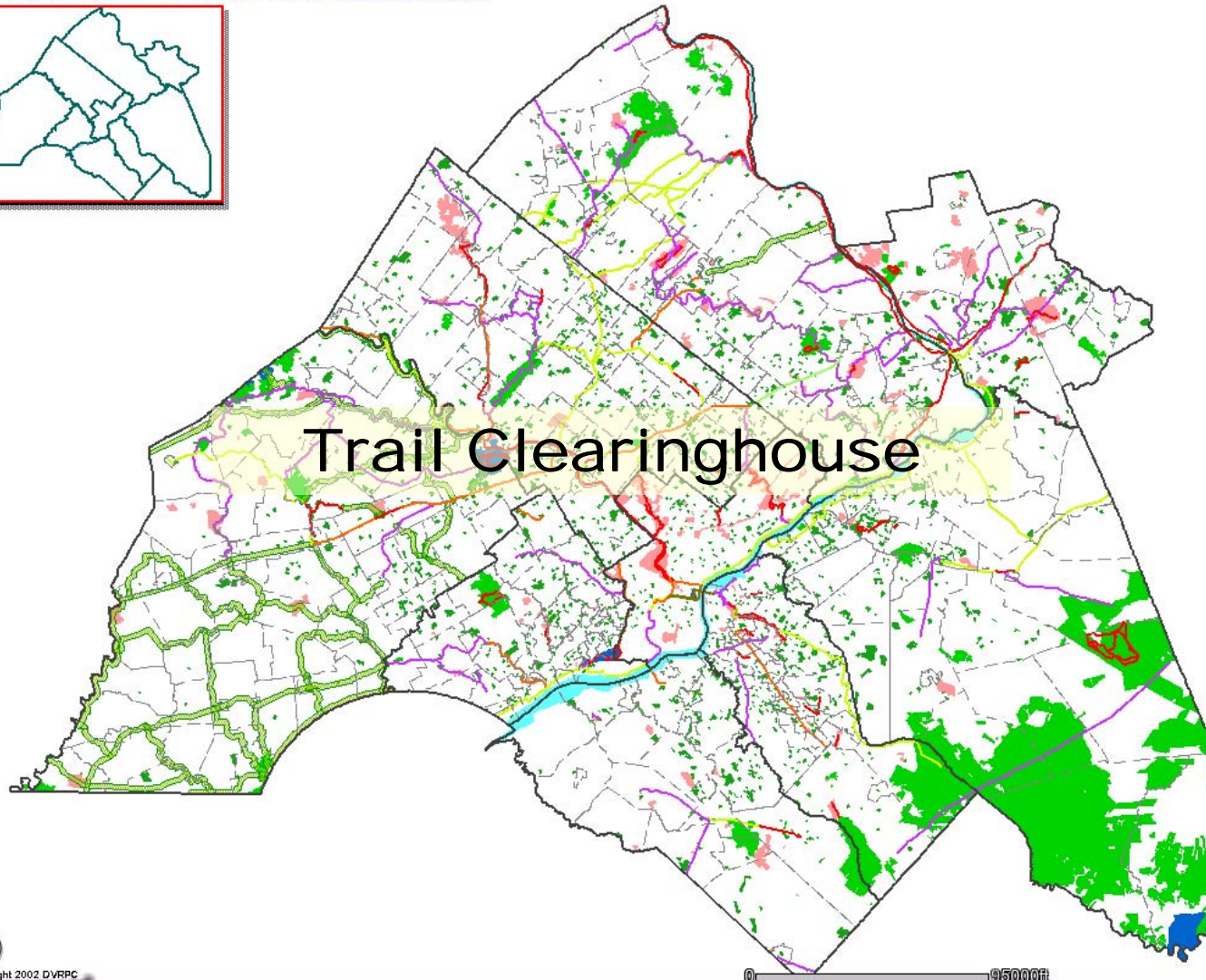
Visible Active

- ☒ ☐ County
- ☒ ☐ Municipality
- ☒ ☒ Multi-Use Trails
- ☒ ☐ Regional Recreation Corridor
- ☒ ☐ Parks

REFRESH MAP

## Trail Clearinghouse

 Go to: [GIS Mapping Center](#)



Copyright 2002 DVRPC

0 5000ft



Trail Clearinghouse - Microsoft Internet Explorer

File Edit View Favorites Tools Help

Back Forward Stop Search Favorites Media Print View Source

Address <http://www.dvrpc.org/website/bike/viewer.htm?Title=Trail%20Clearinghouse> Go Links

Layers Legend

**Data Layers**

Select and click on map to zoom in and add layers.

Visible Active

- ☒ ☐ County
- ☒ ☐ Municipality
- ☒ ☒ Multi-Use Trails
  - ☐ Regional Recreation Corridor
  - ☐ Commuter Rail Station
  - ☐ Commuter Rail Line
- ☐ ☐ Streets
- ☒ ☐ Parks

REFRESH MAP

**Trail Clearinghouse**

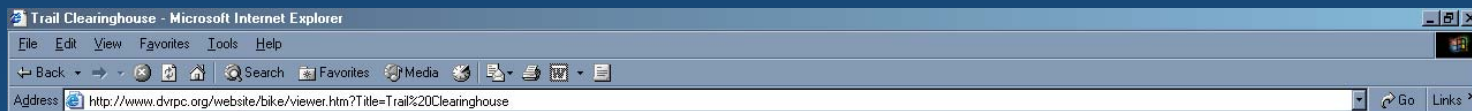
Go to: [GIS Mapping Center](#)

Map: 1778137.08, 501901.38 - Image: 393, 1 - ScaleFactor: 65.12362507633605

Help - Microsoft Internet Explorer

- Zoom In:** Zooms in on the position you click or the box you drag on the map.
- Zoom Out:** Zooms out on the position you click or the box you drag on the map.
- Zoom to Full Extent:** Zooms to the full extent of the map.
- Pan:** Pans the map as you drag the pointer across the map.
- Identify:** Lists the attributes of a feature in the selected Active layer by clicking on the map.
- Query:** Allows you to create queries using active layers data.
- Find:** Locates a feature in the selected Active layer.
- Measure:** Measures distances by clicking on two or more points on map.
- Buffer:** After selecting an area or site using , view data on features within a selected radius.
- Select by Rectangle:** Draw box to enable buffer tool.
- Clear Selection:** Clears the selected feature in the active layer.
- Print:** Prints your map with a legend to your printer.

HELP ?



Layers
Legend

**Data Layers**  
Select and click on map to zoom in and add layers.

**Visible Active**  
☒ County  
☒ Municipality  
☒ Multi-Use Trails  
☒ Regional Recreation Corridor  
☒ Parks

REFRESH MAP

## Trail Clearinghouse

Go to: [GIS Mapping Center](#)

DVRPC/ Online Data/ Query Results - Microsoft Internet Explorer

Address <http://www.dvrpc.org/asp-files/contacts/trail.asp?id=5>

### PEACE VALLEY PARK TRAIL

Bucks County, PA

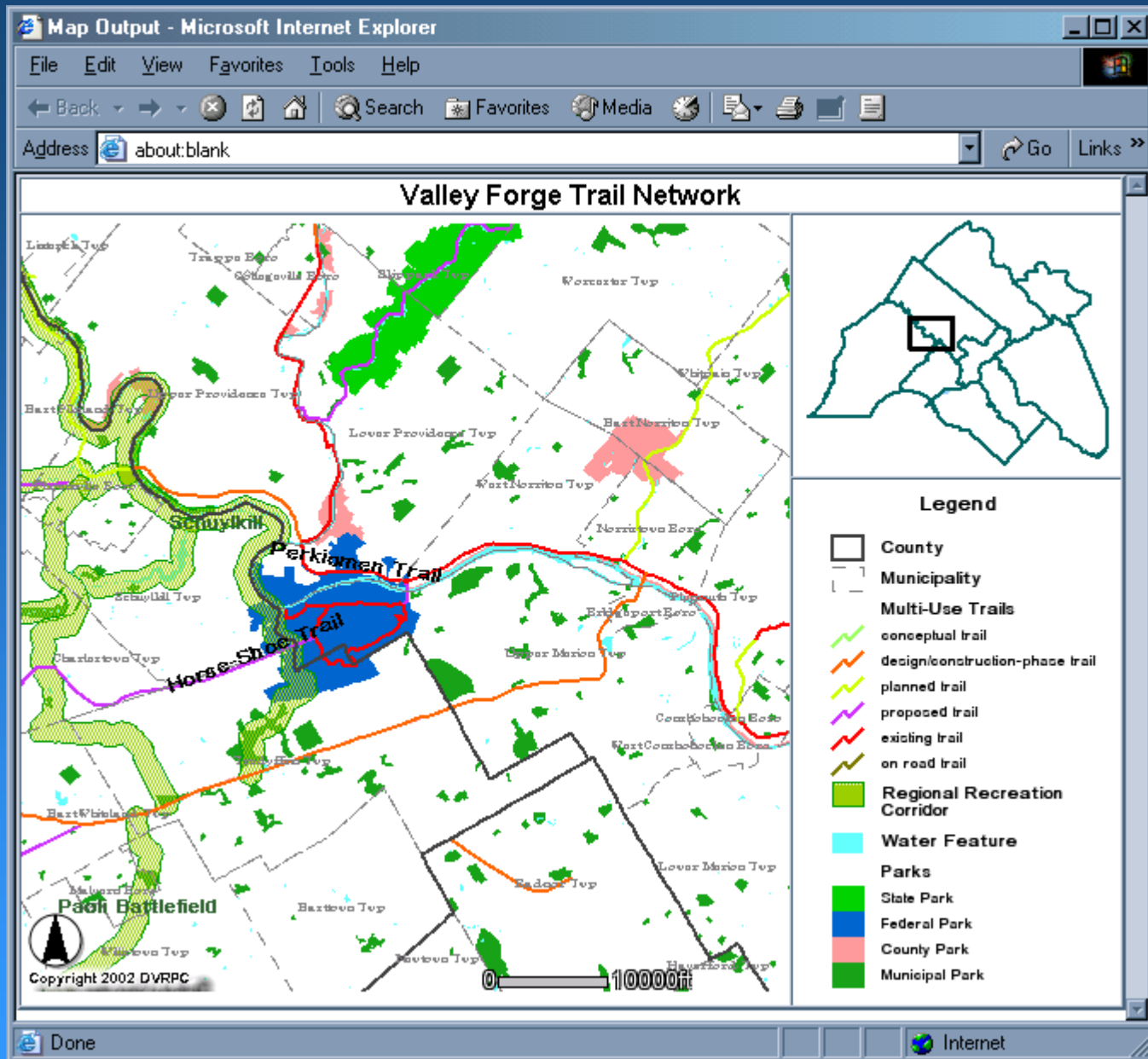
**Trail Description:**  
This trail consists of two separate paved, off-road segments. Each segment is a multi-use trail running along or near the shoreline of Lake Galena. Roadways can be used to link the segments into a loop circling the entire lake.

<b>Development Status:</b>	Complete
<b>End Points:</b>	Each of the two trail segments run through the park, paralleling the shoreline of Lake Galena in New Britain.
<b>Size:</b>	4.0 miles
<b>Issues:</b>	
<b>Contacts:</b>	Jim Burke 215-757-3305

Close Window

Query/Selection Results - Microsoft Internet Explorer

Multi-Use Trails					
Rec	TRAIL NAME	TYPE	COUNTY	STATE	report
1	Peace Valley Park Trail	existing	Bucks	PA	<a href="#">more info...</a>



PRINT



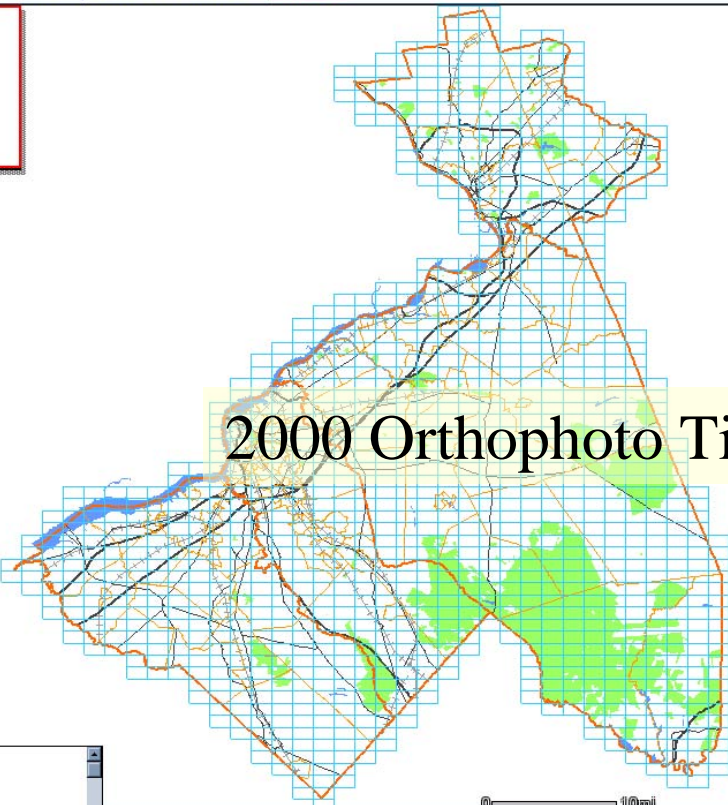
New Jersey 2000 Orthophoto Tile Index - Microsoft Internet Explorer

File Edit View Favorites Tools Help

Back Forward Stop Home Search Favorites Media Print View Source

Address <http://www.dvrpc.org/website/njtile/viewer.htm?Title=New%20Jersey%202000%20Orthophoto%20Tile%20Index> Go Links

### New Jersey 2000 Orthophoto Tile Index - Aerials



0 10mi

Zoom to a Municipality

- Audubon Borough
- Audubon Park Borough
- Barrington Borough
- Bass River Township
- Bellmawr Borough
- Berlin Borough
- Berlin Township
- Beverly City
- Bordentown City
- Bordentown Township

GO

Use **i** for tile grid identification.

Layers Legend

Data Layers

Visible Active

- ☒ Orthophoto Tile Grid
- ☒ County Boundary
- ☒ Municipal Boundary
- ☒ Toll Road
- ☒ Interstate
- ☒ U.S. Route
- ☒ State Route

REFRESH MAP

**ORTHOPHOTO TILE INDEX**

This tile index identifies the coverage of individual orthophoto tiles for both digital and hard copy products. The images are geo-referenced to the New Jersey State Plane NAD 83 coordinate system. The imagery has a pixel resolution of 1.5 feet, a horizontal positional accuracy of +/- 5 feet and a design scale of 1 inch=200 feet. There is no overlap between the orthophoto tiles.

MrSID is a proprietary image file format developed by LizardTech, Inc.  
[www.lizardtech.com](http://www.lizardtech.com)

In the case of the DVRPC orthophoto tiles, the MrSID images are compressed versions of the TIFF image. The compression ratio is

Go to ...

Map: 363921.94, 250192.92 -- Image: 482, 684 -- ScaleFactor: 484.52789699570814

Internet

ZOOM TO

New Jersey 2000 Orthophoto Tile Index - Microsoft Internet Explorer

File Edit View Favorites Tools Help

Back Forward Stop Home Search Favorites Media Print View Source

Address http://www.dvrpc.org/website/ntile/viewer.htm?Title=New%20Jersey%202000%20orthophoto%20tile%20index

### New Jersey 2000 Orthophoto Tile Index - Aerials

Use for tile grid identification.

Layers Legend

#### Data Layers

Visible Active

- ☒ ☒ Orthophoto Tile Grid
- ☒ ☐ County Boundary
- ☒ ☐ Municipal Boundary
- ☒ Toll Road
- ☒ Interstate
- ☒ U.S. Route
- ☒ State Route
- ☒ County Route
- ☒ Other Roads
- ☐ Local Streets

REFRESH MAP

#### ORTHOPHOTO TILE INDEX

This tile index identifies the coverage of individual orthophoto tiles for both digital and hard copy products. The images are geo-referenced to the New Jersey State Plane NAD 83 coordinate system. The imagery has a pixel resolution of 1.5 feet, a horizontal positional accuracy of +/- 5 feet and a design scale of 1 inch=200 feet. There is no overlap between the orthophoto tiles.

MrSID is a proprietary image file format

Go to ...

Zoom to a Municipality GO

Map: 429873.37, 491716.97 -- Image: 525, 10 -- ScaleFactor: 37.10300429184553

Internet

# ZOOM TO

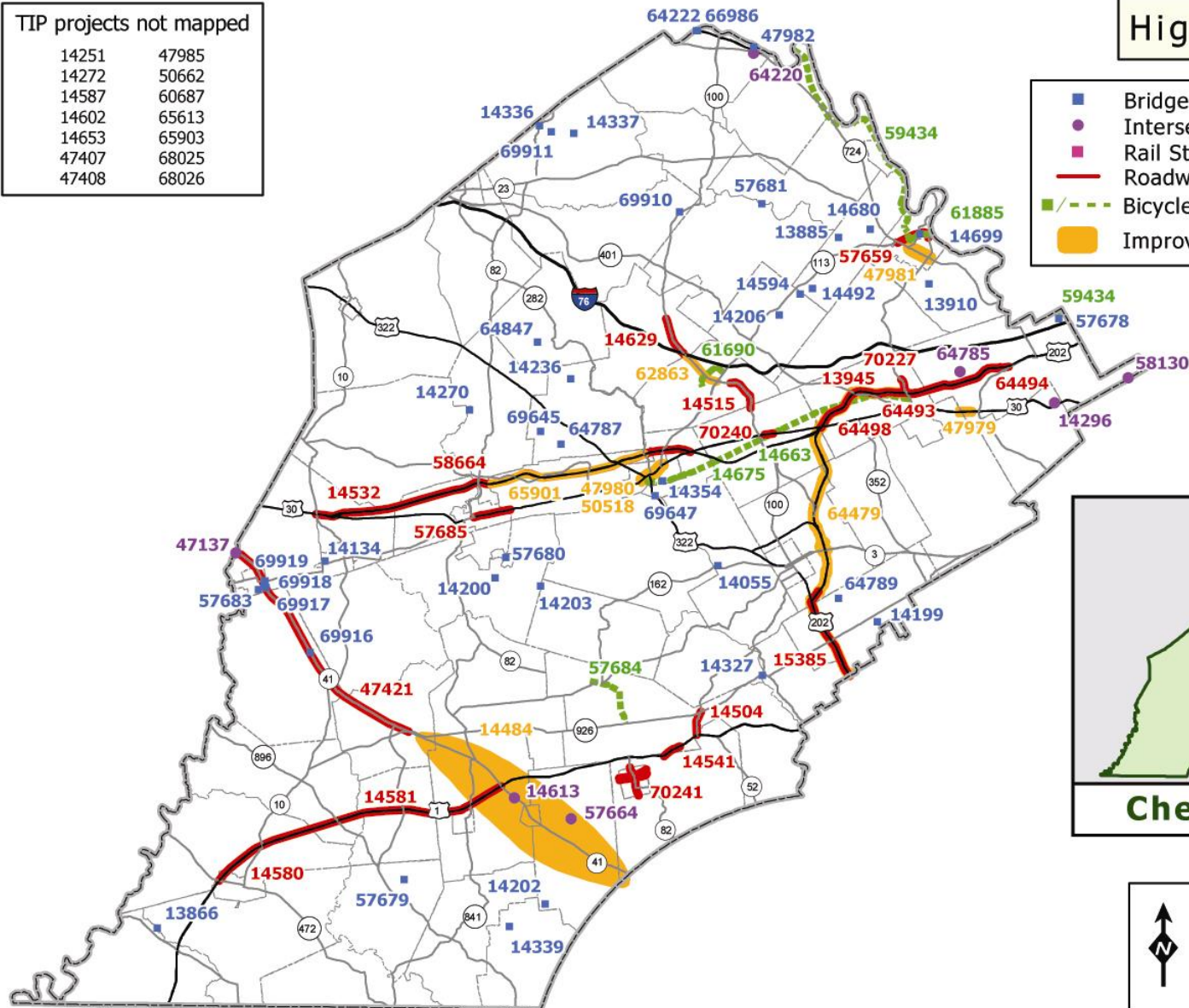


TIP projects not mapped

14251	47985
14272	50662
14587	60687
14602	65613
14653	65903
47407	68025
47408	68026

## Highway Program

- Bridge Improvement
- Intersection Improvement
- Rail Station Improvement
- Roadway Improvement
- /--- Bicycle/Pedestrian Improvement
- Improvement Area



## Chester County



0      2      4      6

Miles



Delaware Valley  
Regional Planning Commission  
October 2004

# TIP Interactive Mapping: Pennsylvania

Discuss

Go to ...

## Data Layers

Visible Active

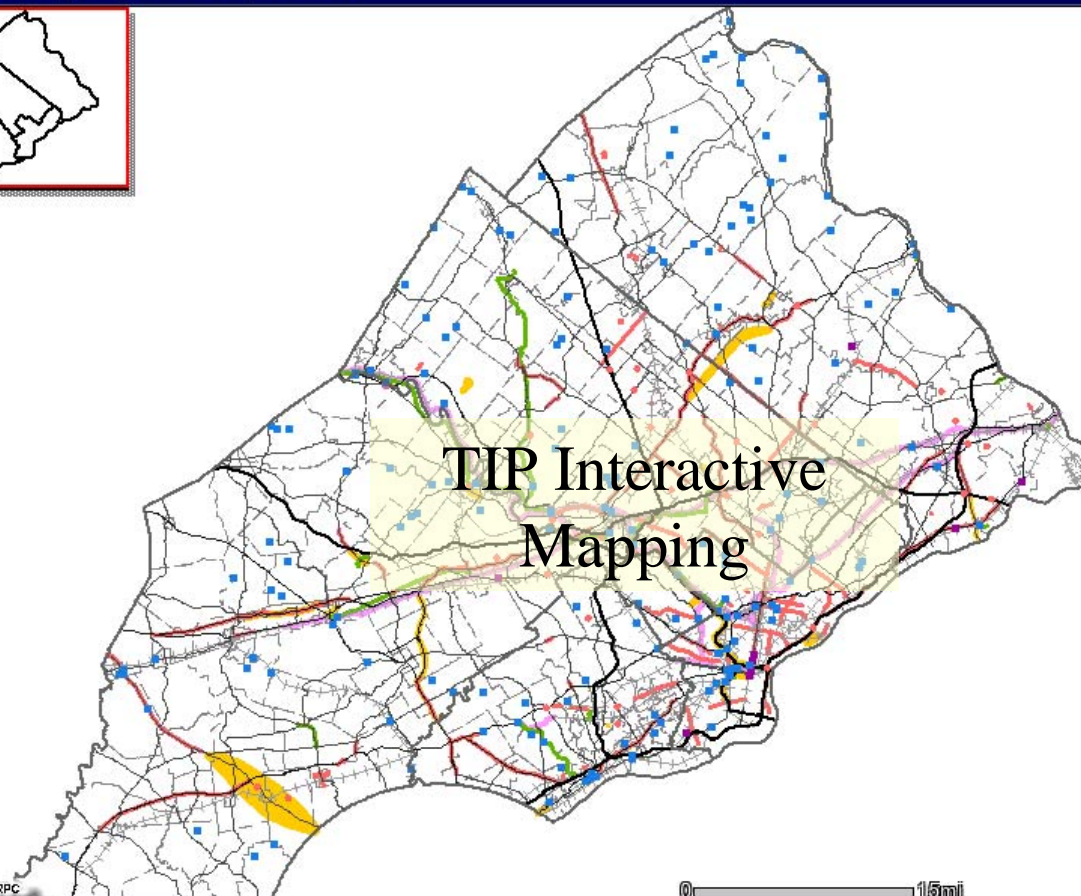
- ☒ ☐ County Boundary
- ☒ ☒ Bridge Improvement
- ☒ ☐ Intersection Improvement
- ☒ ☐ Rail Station Improvement
- ☒ ☐ Roadway Improvement
- ☒ ☐ Bicycle/ Pedestrian Trail
- ☒ ☐ Rail Improvement
- ☒ ☐ Municipal Boundary
- ☒ ☐ Improvement Area (line feature)
- ☒ ☐ Improvement Area

REFRESH MAP

## Legend

- ☐ County Boundary
- ☒ Bridge Improvement
- ☒ Intersection Improvement
- ☒ Rail Station Improvement
- ☒ Interstate
- ☒ US Route
- ☒ PA Route
- ☒ Rail
- ☒ Roadway Improvement
- ☒ Bicycle/ Pedestrian Trail

Search



Copyright (C) 2002 DVRPC

0 15mi

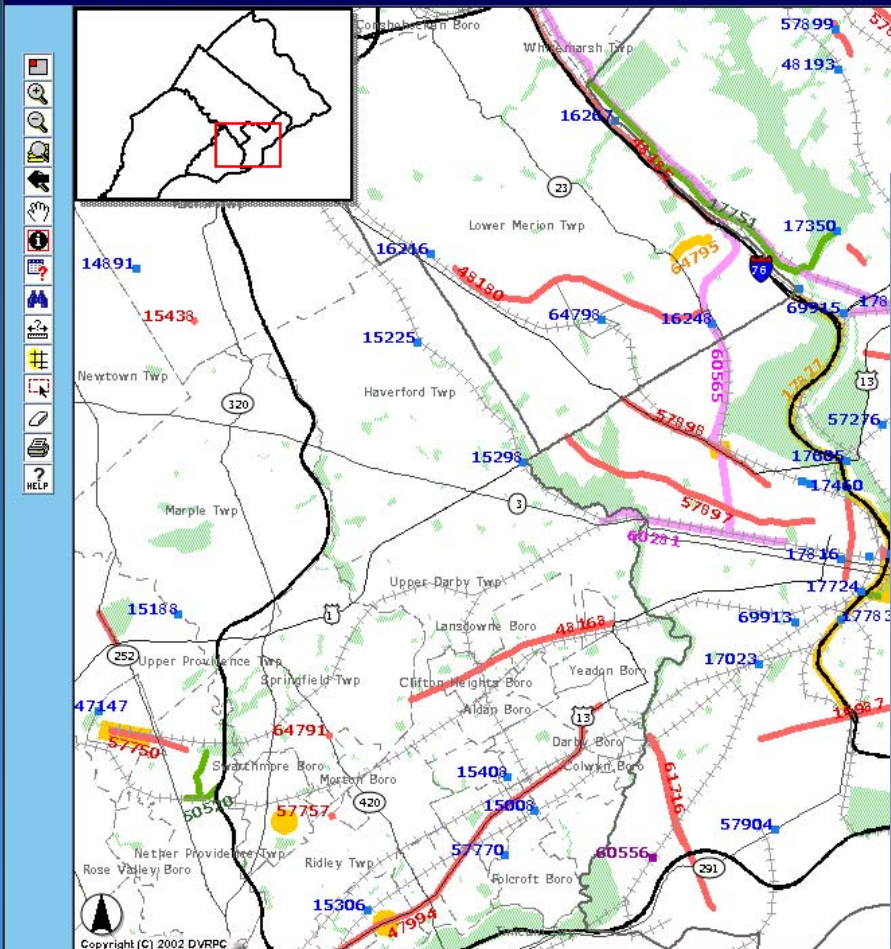
Zoom to a County GO

Zoom to a Municipality GO



# TIP Interactive Mapping:Pennsylvania

Go to...



- ## Data Layers
- Visible Active
- ☒ County Boundary
  - ☒ Bridge Improvement
  - ☒ Intersection Improvement
  - ☒ Rail Station Improvement

## DVRPC TIP Project Detail

Philadelphia						
MPMS# 64806		34th Street (Signals)				
AQ Code: 2010M		Mantua Avenue to Spruce Street Signal Improvement				
		Signal modernization , minor roadway improvements, pavement markings and related work at 9 intersections.				
		Philadelphia				
		TIP Program Years (\$000)				
Phase	Fund	2005	2006	2007	2008	LATER FYs
FD	LOCAL	150	0	0	0	0
CON	HWY	0	0	0	0	880
CON	H-STATE	0	0	0	0	220
Fiscal Year Total		150	0	0	0	1100
Total FY 05-08 Cost					150	

## Roadway Improvement

Rec	MPMS#	County	PROJECT	TIP Project Detail
1	64806	Philadelphia	34th Street (Signals) Mantua Avenue to Spruce Street	<a href="#">report</a>

- Roadway Improvement
- Bicycle/ Pedestrian Trail
- Rail Improvement
- Municipal Boundary

Zoom to a County GO

Zoom to a Municipality GO

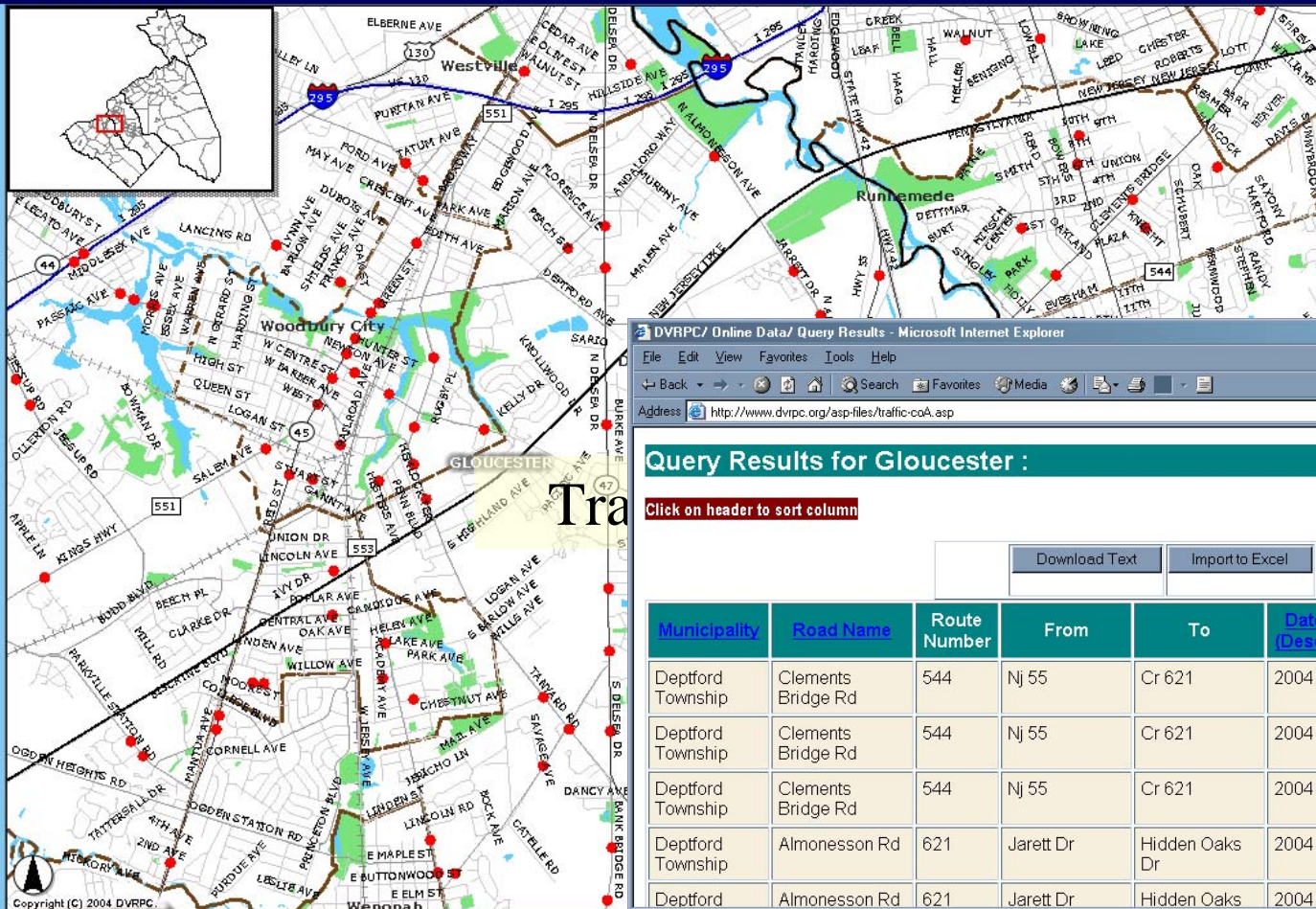
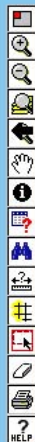
Search





## New Jersey Traffic Counts

Go to ...



## Data Layers

Visible Active

- ☒ NJ Traffic Counts
- ☐ County Boundary
- ☐ Highways
- ☐ Local Roads
- ☐ Municipal Boundary

REFRESH MAP

## Legend

Selected\_Features

## DVRPC/ Online Data/ Query Results - Microsoft Internet Explorer

## Query Results for Gloucester :

Click on header to sort column

Download Text

Import to Excel

Municipality	Road Name	Route Number	From	To	Date (Desc.)	AADT (Desc.)	Count Direction	DVRPC Identifier
Deptford Township	Clements Bridge Rd	544	Nj 55	Cr 621	2004	9,851	West	36674
Deptford Township	Clements Bridge Rd	544	Nj 55	Cr 621	2004	20,344	Total	36673
Deptford Township	Clements Bridge Rd	544	Nj 55	Cr 621	2004	10,493	East	36673
Deptford Township	Almonesson Rd	621	Jarett Dr	Hidden Oaks Dr	2004	7,562	South	36672
Deptford	Almonesson Rd	621	Jarett Dr	Hidden Oaks	2004	7,808	North	36671

NJ Traffic

Rec	Municipality	Route Number	Road Name	From	To	Count Date	AADT	Count Direction	DVRPC Identifier
1	DEPTFORD TOWNSHIP	544	CLEMENTS BRIDGE RD	ALMONESSON AVE	CR 645 COOPER ST	2001	17799.00000	BOTH	29713
2	DEPTFORD TOWNSHIP	544	CLEMENTS BRIDGE RD	CR 645	NJ 55	2003	18582.00000	BOTH	34179

Zoom to a County GO

Zoom to a Municipality GO

Search

Conservation Planning - Microsoft Internet Explorer

File Edit View Favorites Tools Help

Back Forward Stop Home Search Favorites Media Print

Address http://www.dvrpc.org/website/wpenn1/viewer.htm?Title=Conservation%20Planning Go Links

Layers Legend

1. Select Theme

Default Theme

2. Select Layers

Select and click on map to zoom in and add layers.

Visible Active

☒ State Boundary

☒ Municipalities

☐ House District (PA)

☐ House District (NJ)

☐ House District (DE)

☐ Senate District (PA)

☐ Senate District (NJ)


☐ Senate District (DE)


☒ County


REFRESH MAP

Conservation Planning

Go to: GIS Mapping Center | Trail Clearinghouse



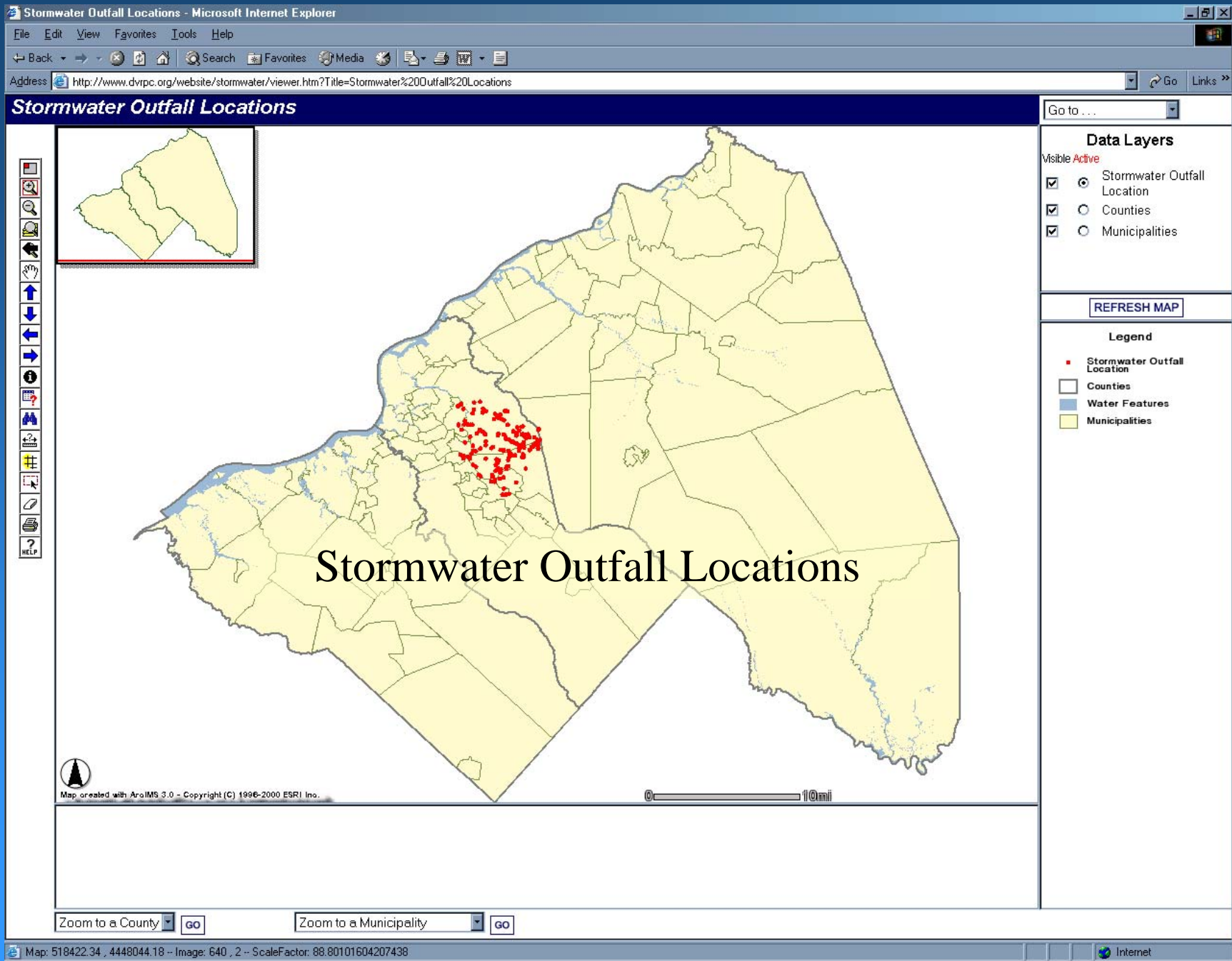


  
Copyright 2000 Delaware Valley Regional Planning Commission

0 30mi

Done Internet







Layers

Legend

## 1. Select Theme

Default Theme

[Theme Metadata](#)

## 2. Select Layers

Click to zoom in  
and add layers.

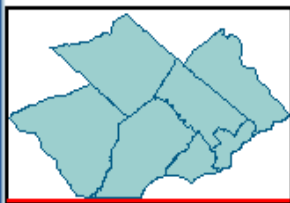
Visible Active

- |                                     |                                  |           |
|-------------------------------------|----------------------------------|-----------|
| <input checked="" type="checkbox"/> | <input checked="" type="radio"/> | County    |
| <input type="checkbox"/>            | <input type="radio"/>            | School    |
| <input type="checkbox"/>            | <input type="radio"/>            | Districts |
| <input type="checkbox"/>            | <input type="radio"/>            | Census    |
| <input type="checkbox"/>            | <input type="radio"/>            | Tracts    |
| <input checked="" type="checkbox"/> | <input type="radio"/>            | Borough   |
| <input checked="" type="checkbox"/> | <input type="radio"/>            | City      |
| <input checked="" type="checkbox"/> | <input type="radio"/>            | Township  |

3. Refresh Map

**TEAM**  
*Pennsylvania*

Business Resource Network

Go to: [General Mapping](#) | [Team PA website](#)

Copyright 2000 Delaware Valley Regional Planning Commission

0 20mi

# Future Applications

- Environmental Justice
- Transit
- Census mapping
- DVRPC's Forecast mapping

# Planned Improvements

- Enhance/improve current applications
- Hyperlinks  
(websites, photos)
- New layers  
(2000 Employment Centers, 2005 Land Use, Major Employers, Shopping Centers)
- Additional themes  
(DVRPC Forecasts, 2000 Census)

# For more information visit DVRPC's website:


**DVRPC - The Delaware Valley Regional Planning Commission** - Microsoft Internet Explorer

File Edit View Favorites Tools Help

Back Forward Stop Reload Home Search Favorites Media Print Copy Paste

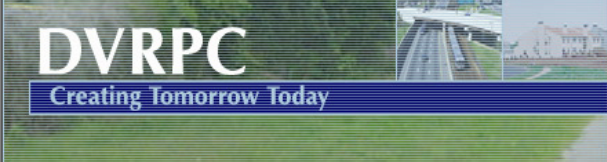
Address <http://www.dvrpc.org/> Go Links

---

**Delaware Valley Regional Planning Commission**

[Sitemap](#) | [Careers](#) | [RFPs](#)

[About Us](#) | [Data Services](#) | [Transportation](#) | [Regional Planning](#) | [Public Affairs](#) | [Links](#)



[Member Governments](#)

[Local Governments](#)

[Data Services](#)

[Transportation](#)

[Planning](#)


[Media](#)

---

**Welcome**

Serving the the Greater Philadelphia-Camden-Trenton area for almost 40 years, DVRPC works to foster regional cooperation in a nine-county, two-state area. City, county and state representatives work together to address key issues, including transportation, land use, environmental protection, information sharing and economic development.


**DVRPC Calendar of Events**



**Quick Links**

**Site Search**

Click on the county for more info



**Delaware Valley 9 County Region**


**Poll the Region**

What housing issue is most important to the region's future?

[See Results](#)

**Announcements**

DVRPC is launching the 6th grant application round for the FTA's Job Access & Reverse Commute Grant Program



Delaware Valley Regional Planning Commission  
The Bourse Building • 111 S. Independence Mall East, 6th Floor • Philadelphia, PA 19106  
Comments/Suggestions: [webmaster@dvrpc.org](mailto:webmaster@dvrpc.org) • 215.592.1800  
Last updated: 6/1/2004 | Copyright© 2004. All rights reserved.

Done Internet

# www.dvrpc.org